



PRODUCT INFORMATION BULLETIN

Date: May 16, 2011
Number: 2313
Division: Genie®
Product Family: Residential Openers
Product Series: IntelliG™ & TriloG™ Control Boards
To: All Genie® Professional Line Wholesalers, Dealers and Installers
Re: Part Number Identification Labels on Circuit Boards

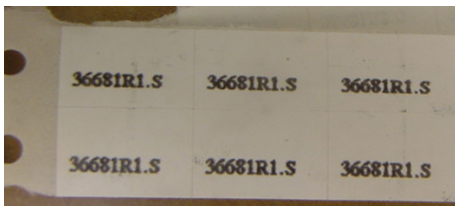
Previously, when ordering the service part number for a control board for an IntelliG or TriloG garage door opener, the part number that identified the board was shown only on the outside of the box that the board came in.

On 5/1/11, in an effort to improve our service, we began including this part number on an identification label on the capacitor of the board itself.

Affected service part numbers for control boards are:

Chain / Belt	Screw Drive
36681R1.S : IntelliG 1000	37470R1.S : TriloG 1200
36681R2.S : IntelliG 1200	37470R2.S : TriloG 1500

The additional label on the board itself is to assist with proper identification in the field.



Sample Label Sheet



Label Shown on the
Capacitor of the Board Itself