



PRODUCT INFORMATION BULLETIN

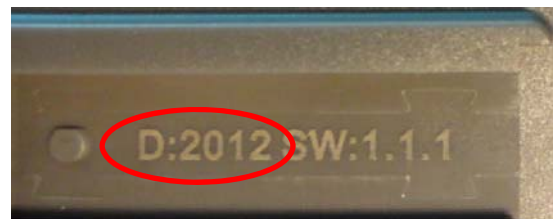
Date: March 7, 2013
Number: 5328
Division: Genie®
Product Family: Residential Openers
Product Series: Accessories
To: All Genie Professional Line Wholesalers, Dealers and Installers
Re: Auto Seek Dual Frequency Remotes (PN 37218R/G3T-BX)
Now Intellicode® from the Factory

The previous factory default setting for the Auto Seek Dual Frequency Remote (PN 37218R/G3T-BX) was Intellicode 2 and required additional programming steps to be compatible with Intellicode 1 ReliaG® and legacy openers. In an effort to improve ease of use in our opener accessory lineup, starting in production as early as February 25th, you will no longer need to toggle the remote between Intellicode 1 & Intellicode 2. We also will no longer distinguish between Intellicode '1' or '2' and will simply use the designation of Intellicode for our rolling code. Going forward, the word Intellicode will no longer be seen with the designation of '1' or '2' after it. You might recall, this same change was made with the wireless keypad (PN 37224R), reference PIB 4774.

Remotes (PN 37218R/G3T-BX) with a date code of "5212" and later, and a software revision number of "2.0.3", are now compatible with all non-fixed code Genie operators without requiring any additional programming steps. The additional steps can still be performed if you have already committed them to memory, however, they are not required for the remote to operate the unit.

A remote that has shipped from the factory in the commonized Intellicode mode can be recognized by the following:

- The front of the accessory carton no longer states "Features Intellicode 2" at the bottom
- The date code on the back of the new remotes will state "5212" and the software revision will say "2.0.3"



Part Number: 37218R
Model: G3T-BX