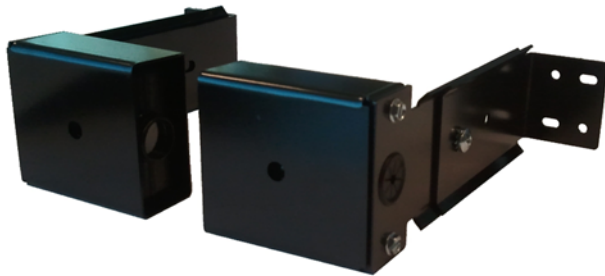




PRODUCT INFORMATION BULLETIN

Date: July 28, 2016
Number: 10591
Division: Genie®
Product Family: Commercial Operators
Product Series: Accessories
To: All Genie Professional Line Wholesalers, Dealers and Installers
Re: Scheduled Upgrade: Monitored Commercial Rugged Photo Eye Set
(Part Number OPAKPE2.S)

The commercial rugged monitored photo eye part number OPAKPE.S is scheduled to undergo enhancements that will make it even more effective in commercial settings.



Scheduled upgrade – running change

Original Part Number: OPAKPE.S

Description: Monitored Photo eye; Sheet metal protected square photo eye with ability for conduit connection.

At this time, there is approximately 1 month of OPAKPE.S inventory left in stock. After this inventory is depleted, orders will be filled with the new OPAKPE2.S model. OPAKPE.S will no longer be offered after inventory depletion.

The enhanced rugged monitored photo eye design is estimated to begin shipping approximately August 15, 2016, and can be used for the same applications as the original OPAKPE.S. The new model may be used as a direct service replacement for the current model provided the transmitter and receiver are installed as a set. Please note, while there is no change in price, there is a change in the physical form of the new units which may require slightly different positioning for certain applications.



New Part Number: OPAKPE2.S

Description: Monitored Photo eye; Sheet metal protected photo eye with ability for conduit connection.

Improvements:

- Lengthened optics tube and narrowed beam opening to reduce interference from sunlight
- Conformal coated circuit board designed to increase protection from moisture