



PRODUCT INFORMATION BULLETIN

Date: August 23, 2011
Number: 2815
Division: Genie®
Product Family: Residential Openers
Product Series: Safe-T-Beams®
To: All Genie Professional Line Wholesalers, Dealers and Installers
Re: Safe-T-Beams® Extension Bracket Kit

Genie has released a Safe-T-Beam extension bracket kit to be used in conjunction with the standard beam set in the IntelliG™ and TriloG™ series openers. These kits can be used as a 1 piece design when mounting directly to track or as a 2 piece design in many other applications. One kit will cover one set of existing safety beams.

1 Pack Part Number	37909S.S
6 Pack Part Number	37909R.S

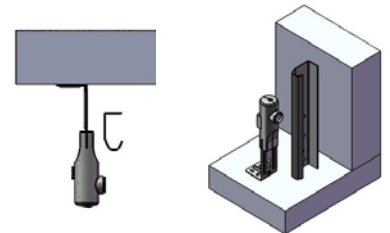
Current safety beams in the IntelliG and TriloG openers
(Bracket Only) (Beam & Bracket)



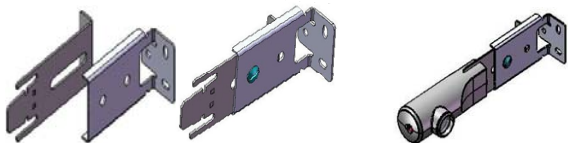
Traditional Installation

- Front wall / door frame
- Floor install

Common Applications



Safety Beam Extension Kit – 2 pc bracket
(Rail Bracket with Extension) (Beam & Brackets)

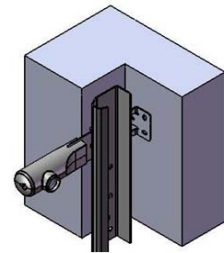


Low headroom track

- Adjustable to extend beyond track
(Shown left)

Tight side room

- Reversible Mount
- Can Mount Bracket behind track
(shown right)



Safety Beam Extension Kit – 1 pc bracket
(Rail Bracket Only) (Beam & Bracket)



Low headroom track & Tight side room

- Ability to mount on track
(shown right)
- Reversible Mount
- Foot provides additional support against wall

