



PRODUCT INFORMATION BULLETIN

Date: November 21, 2012
Number: 4774
Division: Genie®
Product Family: Residential Openers
Product Series: Accessories
To: All Genie Professional Line Wholesalers, Dealers and Installers
Re: Keyless Entry Pads Now Intellicode® from the Factory

The previous factory default setting for the Keyless Entry Pad (pn 37224R) was Intellicode 2 and required additional programming steps to be compatible with ReliaG® and legacy openers. In an effort to improve ease of use in our opener accessory lineup starting in production November 19th, you will no longer need to toggle the keypad between Intellicode 1 & Intellicode 2. We also will no longer distinguish between Intellicode '1' or '2' and will simply use the designation of Intellicode for our rolling code. This accessory as of November 12 production is now compatible with all non-fixed code Genie operators without requiring any additional programming steps.

A keypad that has shipped from the factory in Intellicode 1 mode can be recognized by the following:

- The front of the accessory carton no longer states 'Features Intellicode 2' at the bottom
- Updated lid instructions; these instructions also show 2 asterisks (*) symbols at the bottom
- Updated general instructions
- Label on the back of the keypad (that is against the wall); this label will remain present at least through mid-December
- Also in mid-December, the new software revision level will be etched into the backside of the item along with the date code



Part Number: 37224R
Model: GK-BX

The following pages show:

- New Keypad Lid Instructions
- New Keypad Instructions for Intellicode

Going forward, the word Intellicode will no longer be seen with the designation of '1' or '2' after it.

⚠ WARNING
⚠ AVERTISSEMENT
⚠ ADVERTENCIA



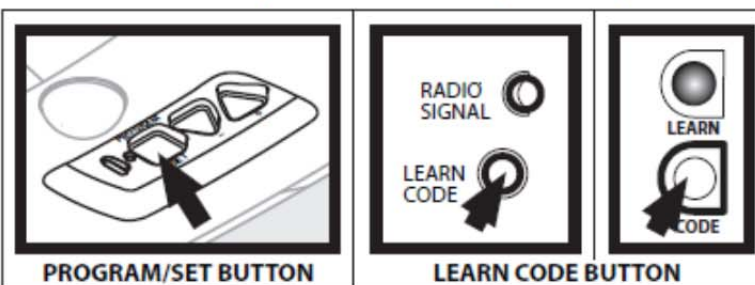
Moving Door can
cause Serious
Injury or Death





Step 1: Setting up a PIN

1. Press in order **3** - **5** - **7**.
2. Press the **PROGRAM** Key.
3. Enter your **New PIN**. (3 - 8 Characters.)
4. Press **PROGRAM** Key.
KEYPAD IS PROGRAMMED.


Step 2: Programming Opener

1. Locate the Programming button on opener as shown dependent on style of opener:



2. Press  or **Learn Code** Button.
(Opener **LED** flashes.)
3. On Keypad, **Enter your PIN**.
4. Press the  Key.
(Opener **LED ON** steady.)
5. Press the  Key again. (**LED** goes **OFF**.)
6. Press the  Key again. (Opener **RUNS**.)

Step 3: Using the Keypad

1. Enter your PIN.
2. Press  Key.
(Door Opener **will run**.)

Forgotten PIN or Changing PIN?
Consult your Keypad Instruction.

Battery Replacement

*If the backlight does not come on during use,
the battery needs to be changed.*

Use standard "AAA" batteries.

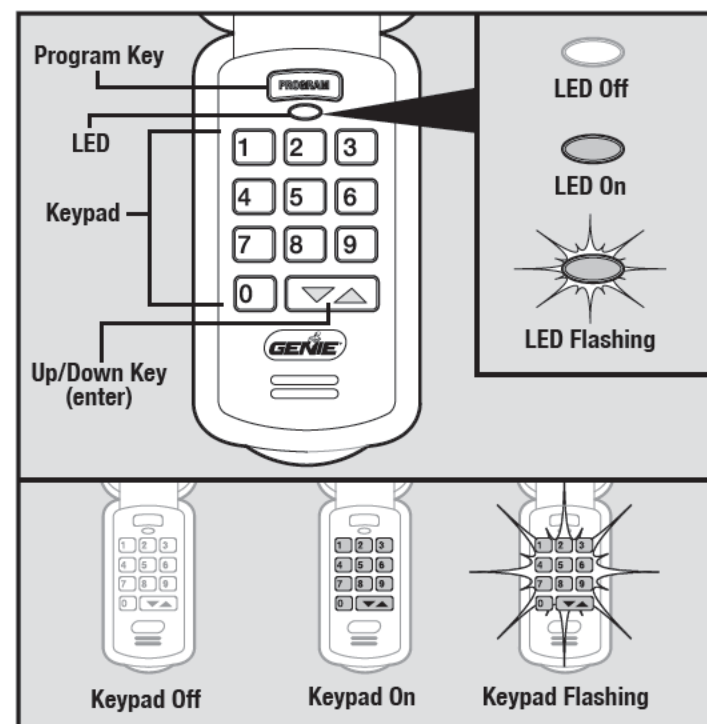
*** Need Help? Call 1-800-354-3643 ***



Wireless Keypad Instructions

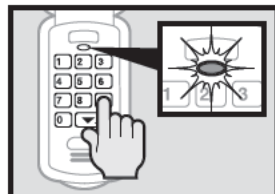
FOR YOUR CONVENIENCE—IT'S EASIER TO PERFORM PROGRAMMING BEFORE MOUNTING KEYPAD.

Keypad Overview



Keypad LED's

Successful Entries

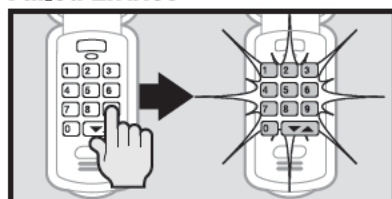


The Keypad's LED will flash on and off each time you press a key indicating the keypad has accepted each entry.



The Keypad's LED and Program key will flash slowly. Keypad lights will remain ON (for 30 seconds) if you have entered a valid PIN or have successfully programmed your Keypad.

Failed Entries



The Keypad's LED and Program key will light. Keypad will flash quickly if you have entered an invalid PIN or have failed to program your Keypad correctly and then will go OFF. Retry failed step.

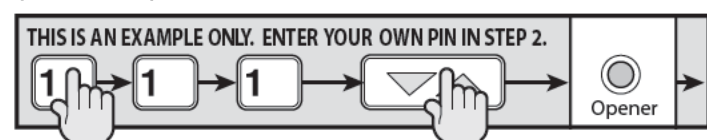


38318501804

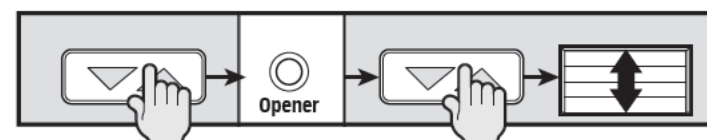
1

Programming the Opener

(continued)



2. Enter your PIN.
3. Press Up/Down key. Opener LEDs will stay on steady.



4. Press Up/Down key again. Opener LEDs will turn off.
5. Press Up/Down key again. Door opener will run.

NOTE: Pressing any key will stop or start the opener while the door is in motion. The door will automatically stop fully open or closed. When the door has stopped moving, pressing on any single button will activate door until backlight goes off (30 seconds).

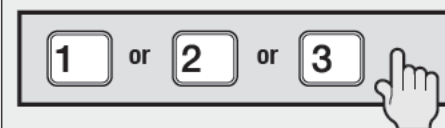
NOTE: Rapid blinking of the red LED on the Powerhead indicates an error. When the blinking stops, you must start programming steps over.

For multiple doors only

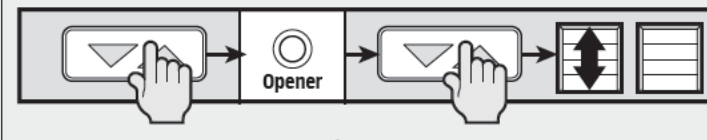
(continued)



1. Enter your PIN.
2. Press Up/Down key. Opener LEDs will stay on steady.



3. Select the number of the door you want to program (1, 2 or 3).



4. Press Up/Down key again. Opener LEDs will turn off.
5. Press Up/Down key again. Door opener will run.

Each door **MUST** be programmed separately. You **MUST** start all steps over when programming multiple doors.

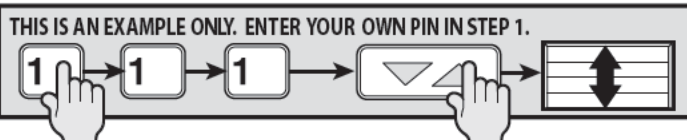
NOTE: Pressing any key will stop or start the opener while the door is in motion. The door will automatically stop fully open or closed. When the door has stopped moving, pressing on any single button will activate door until backlight goes off (30 seconds).

NOTE: Rapid blinking of the red LED on the Powerhead indicates an error. When the blinking stops, you must start programming steps over.

59994

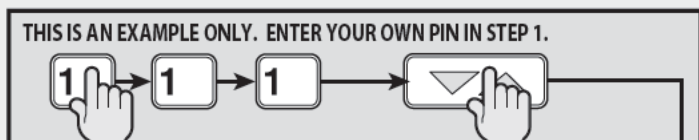
3

Using The Keypad

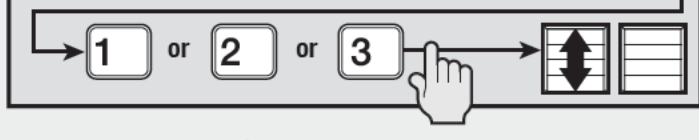


1. Enter your PIN.
2. Press Up/Down key. Door opener will run.

For multiple doors only



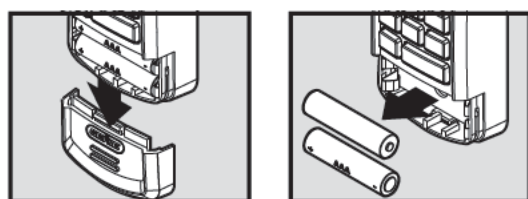
1. Enter your PIN.
2. Press Up/Down key.



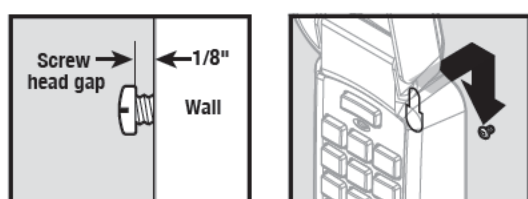
3. Press the number of door to operate. Door opener will run.

Mounting Keypad

The keypad **MUST** be mounted within sight of the garage door(s) at least 5 feet above the floor and clear of any moving door part.

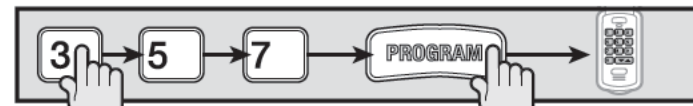


1. Remove battery cover and batteries.

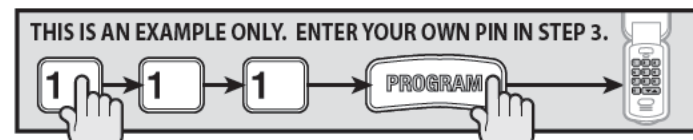


2. Drill 1/16" pilot hole for the top mounting screw (included).
3. Install a screw into the pilot hole, leaving a 1/8" gap between the screw head and wall.
4. Hook the keypad slotted mount on back over the screw.

Setting Up a PIN



1. Press in order 3-5-7.
2. Press the Program key.



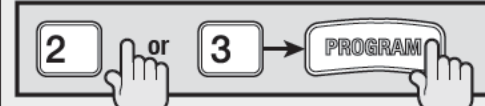
3. Enter your new PIN (3-8 characters).
 4. Press Program key.
- Your single door keypad is ready for programming the opener. Proceed to "Programming the Opener." (See right.)

FOR MULTIPLE DOORS ONLY—CONTINUE BELOW.

For multiple doors only



1. Enter your new PIN (3-8 characters).
2. Press Program key 2 times.

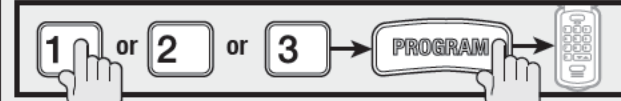


3. Now press the number of doors you need to control. (2 or 3)
4. Press Program key.

After step 4 repeat the following steps for each door.



1. Enter your PIN and press the Up/Down Key



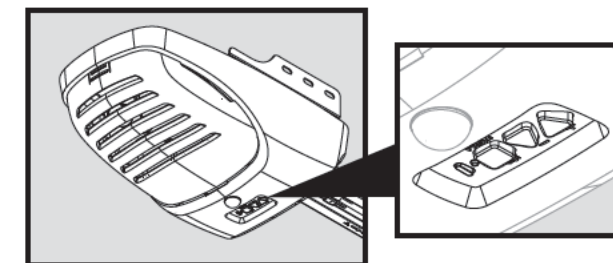
2. Enter number of door 1, 2 or 3.
 3. Press and release the Program key and allow your keypad to go dark.
- Your keypad is now set for all Genie® model openers on the DOOR NUMBER CHOSEN.
- Your multiple door keypad is ready for programming the opener.

GO DIRECTLY TO THE "For multiple doors only" SECTION ON PAGE 3.

Programming the Opener

Locate Your Opener's Programming Buttons and LED

A. New Genie® Openers:



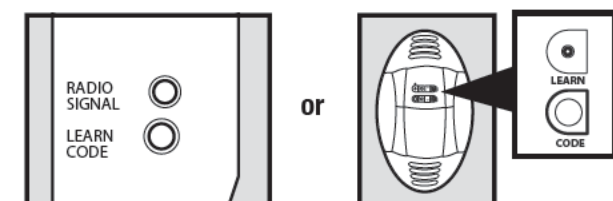
Synchronizing Keypad to Opener



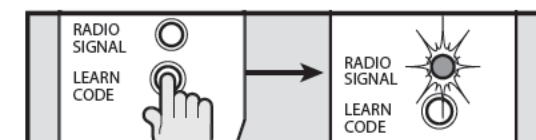
- 1A. Press and hold Program Set key for 2 seconds. (The round LED turns blue and then goes off. The long LED will begin flashing purple.)

Proceed to Step 2 on the next page.

B. Other New Model Genie® Openers:



Synchronizing Keypad to Opener



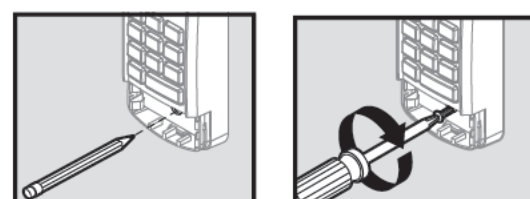
- 1B. Press the Learn Code button and LED will blink.

Proceed to Step 2 on the next page.

NOTE: The Learn Code button and LED may be located under the light lens or you may have to remove your unit's cover.

2

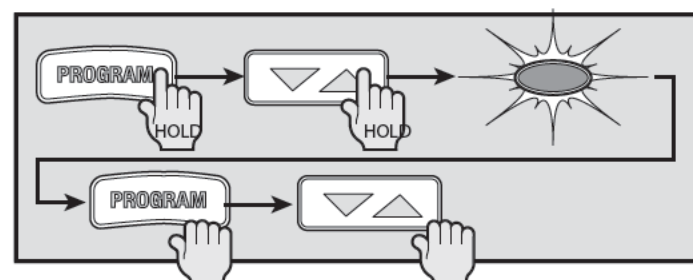
Mounting Keypad



5. Mark and drill a pilot hole for the bottom screw and secure keypad to wall (DO NOT overtighten).
6. Reinstall batteries and cover.

Resetting PIN

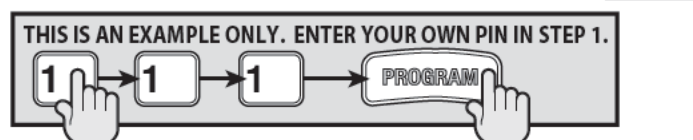
If you have forgotten your PIN or you fear it may have fallen into unauthorized hands, you must erase the old programming.



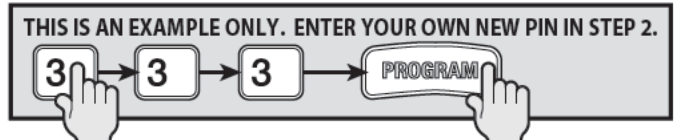
To erase, follow these simple steps:

1. Press and hold both the Program key and Up/Down key for about 5 seconds. The LED will slowly blink and then go out. When the LED goes out you have successfully erased the old programming.
2. Go back and follow the steps in "Setting Up a Pin" and "Programming".

Changing Your PIN



1. Enter your current PIN, then press Program key.



2. Enter your new PIN, press Program key.

NOTE: Unlike "Resetting PIN," You DO NOT need to reprogram your opener after changing your PIN.

Additional Genie® products can be ordered through your local GENIE® Professional Dealer. To locate a dealer near you—call 800-OK-GENIE. If the first five digits of your serial number fall between 10289 and 11188 contact Genie for assistance 800-354-3643.

FCC and IC CERTIFIED

This device complies with FCC Part 15 and RSS 210 of Industry Canada. This equipment has been tested and found to comply with the limits for a Class B digital device, pursuant to Part 15 of the FCC Rules. These limits are designed to provide reasonable protection against harmful interference in a residential installation. This equipment generates, uses and can radiate radio frequency energy and, if not installed and used in accordance with the instructions, may cause harmful interference to radio communications. However, there is no guarantee that interference will not occur in a particular installation. If this equipment does cause harmful interference to radio or television reception, which may be determined by turning the equipment OFF and ON, the user is encouraged to try to correct the interference by one or more of the following measures: (1) Re-orient or relocate the receiver antenna, (2) Increase the separation between the opener and receiver, (3) Connect the opener into an outlet on a circuit different from that to which the receiver is connected, and (4) Consult your local dealer.

4

GENIE 38318501804